



Situ 5 io



EN Instructions

Ref.5122849A



HOME MOTION by **somfy**

io-homecontrol® provides advanced and secure radio technology that is easy to install. io-homecontrol® labelled products communicate with each other, improving comfort, security and energy savings.



100% recycled paper

HOME MOTION by **somfy**

Somfy SAS
50 avenue du Nouveau Monde
F-74300 CLUSES
www.somfy.com

EN The Situ 5 io remote control allows the user to control up to five groups of one or more io-homecontrol® end products.

1. Safety and liability

1.1. Liability

Before installing and using this product, please read these instructions carefully. This Somfy product must be installed by a home motorisation and automation professional. Moreover, the installer must comply with standards and legislation in the country in which the product is being installed, and inform his customers of the operating and maintenance conditions for the product. He must give them these instructions. Any use outside the sphere of application defined by Somfy is prohibited. This invalidates the warranty and discharges Somfy of all liability, as does any failure to comply with the instructions given herein. Never begin installing without first checking the compatibility of this product with the associated equipment and accessories.

1.2. Safety instructions

- Keep the Situ 5 io out of the reach of children.
- Never drop, knock, puncture or immerse the Situ 5 io in liquid.
- Do not use abrasive products or solvents to clean it.

2. The Situ 5 io in detail

Figure A

- (a) «Battery low» indicator light
- (b) Channel selection and key activation indicator lights

To select channels 1 to 5, pressing the channel selector switch several times in a row illuminates the indicator lights from 1 to 4 and then all 4 together.

- (c) Application control keys
- (d) Channel selector switch
- (e) Wall mount
- (f) Wall mount recess
- (g) PROG. button

3. Adding/Removing a Situ 5 io

To store the first control: refer to the instructions for the io-homecontrol® drive or receiver.

To add or remove a Situ 5 io to/from an end-product:

Figure B

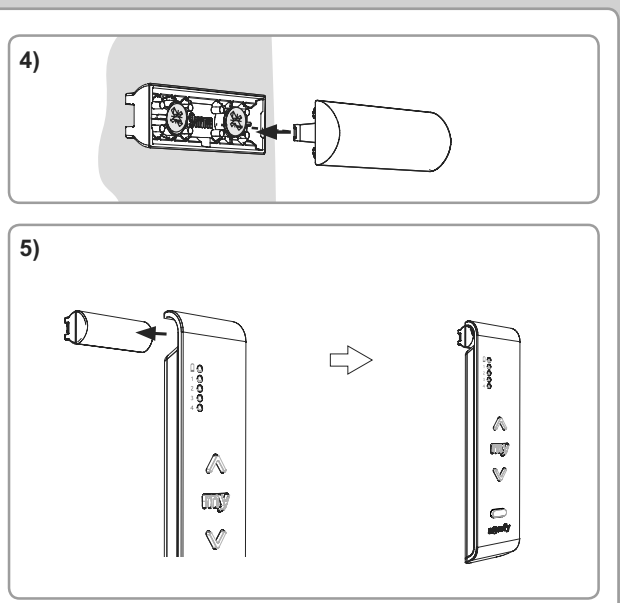
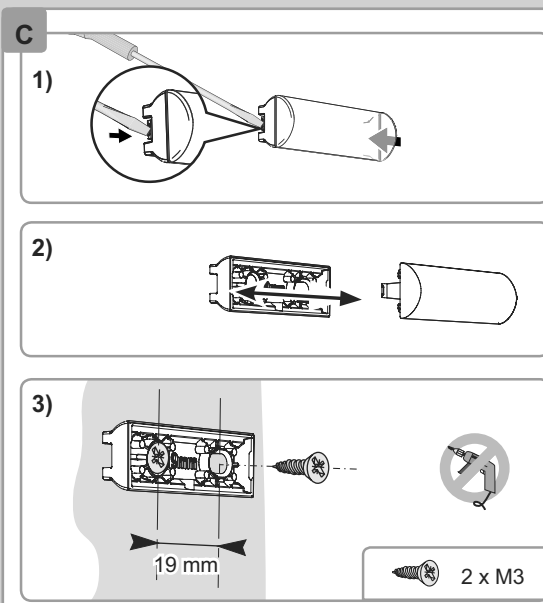
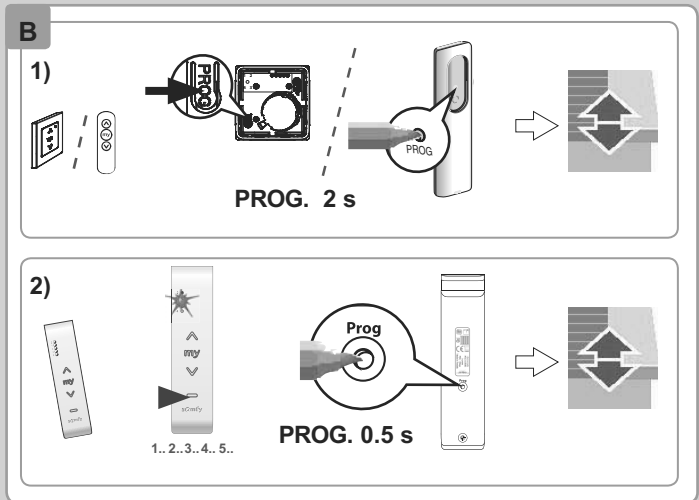
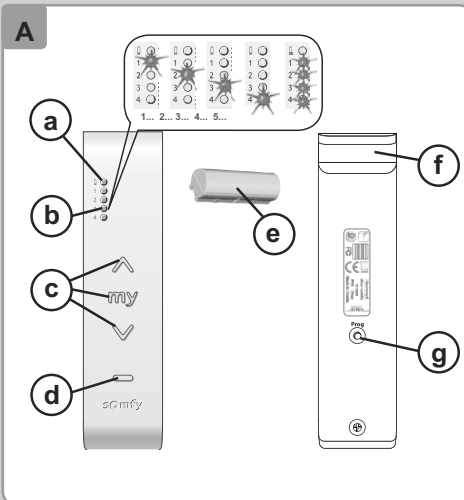
In case of a control with feedback function, refer to its instructions.

- 1) On the individual control already associated with the end-product:
 - Press the PROG. button (≈ 2 s) until the end-product moves back and forth: programming mode is activated for 10 min.
- 2) On the Situ 5 io to be added or removed:
 - Select the required channel for this end-product.
 - Briefly press the PROG. button : the end-product moves back and forth, and the Situ 5 io is added or removed.

4. Attaching the wall mount

Figure C

Referring to the diagram, open the wall mount and fix to a flat surface using a screwdriver.



EN 5. Use

5.1. ^ / v keys

➡ Figure D

5.2. STOP/my button

➡ Figure E

- Select the channel for the end-product and then **briefly** press **my** to stop the activation of the end-product.

➡ Figure F

- If the end-product has been stopped, select its channel and then **briefly** press **my** to activate it until it reaches the favourite position (my).

5.3. Setting, modifying or deleting the favourite position (my)

➡ Figure G

- Select the channel, place the end-product in the required position and then press **my** (≈ 5 s) to set the favourite position (my).

➡ Figure H

- Select the channel, place the end-product in the favourite position (my) and then press **my** (≈ 5 s) to delete it.

6. Tips and recommendations

6.1. Specific information for self-powered drives

➡ Figure I

- 1) Unscrew and unclip the product.
- 2) To **check which mode** a channel is currently in: select the channel, then **briefly** establish contact between the two parts of the activation zone (two semi-circles next to the battery).

(h) Channel indicator light constantly on = standard mode

(i) Channel indicator light flashing = self-powered drive mode

- 3) To **change the mode** a channel is in: select a channel and then establish contact between the two parts of the activation zone for approximately **two seconds**. The channel indicator light will indicate the new mode.


- 4) Reclip and rescrew the product.

6.2. Replacing a lost or broken control point

➡ Figure J

Switch off and restore the power according to the diagram, select the channel and briefly press the PROG. button of the Situo 5 io to be added.

7. Replacing the battery

 Please separate storage cells and batteries from other types of waste and recycle them via your local collection facility.

➡ Figure K

Referring to the diagram, open the Situo 5 io, replace the battery and then close.

8. Technical data

Radio frequency: 868.95 MHz, io-homecontrol®

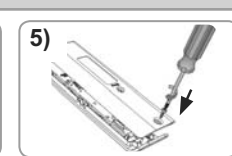
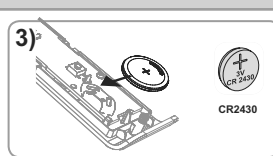
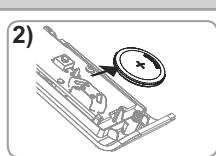
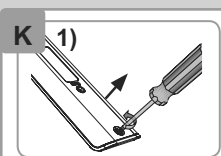
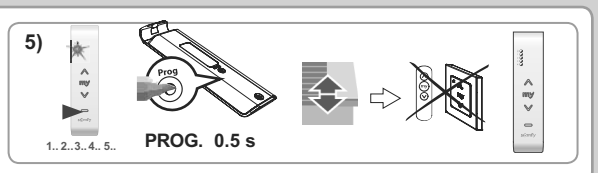
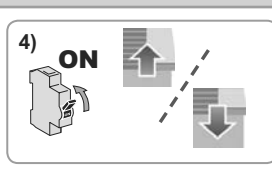
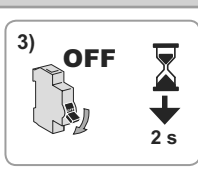
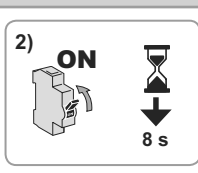
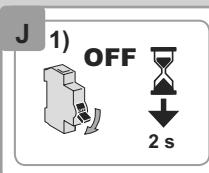
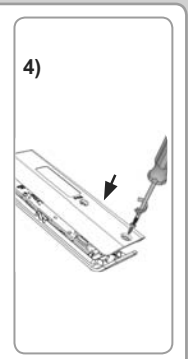
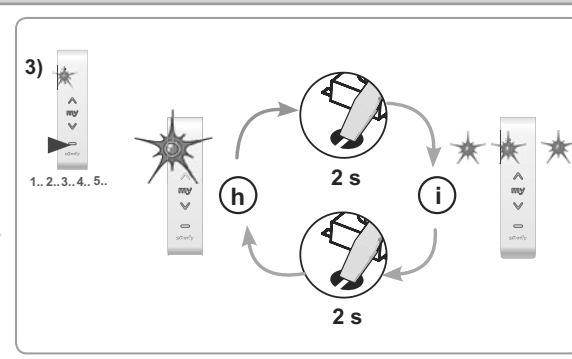
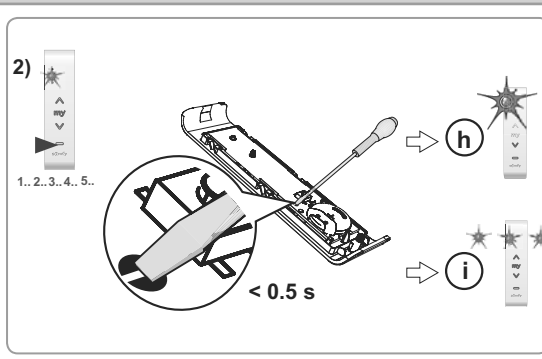
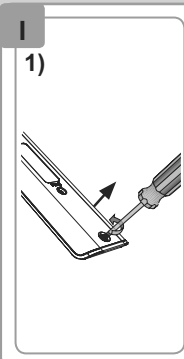
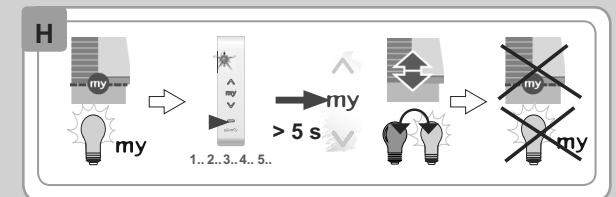
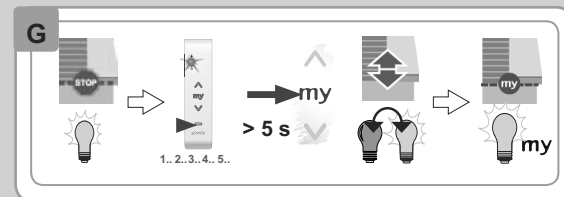
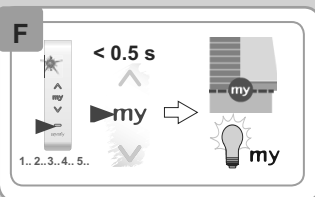
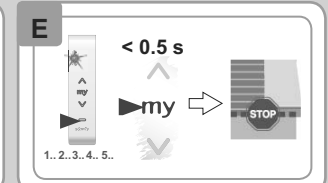
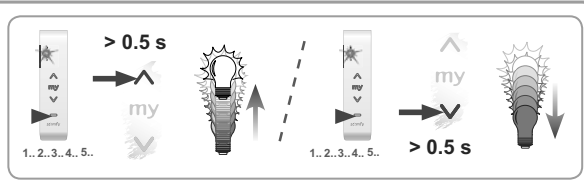
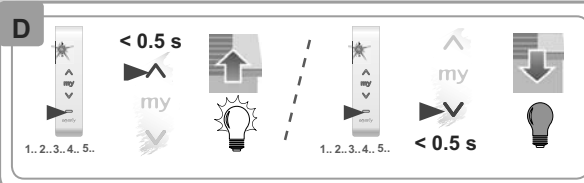
Band transmission frequency : 868.700 MHz - 869.200 MHz

Effective radiated power : F: 868.950 MHz e.r.p. < 25 mW

Radio range (line-of-sight, depending on the environment): 150 m.

Operating temperature: 0°C to +50°C.

Power supply: 1 type CR2430 battery, 3 V



SOMFY hereby warrants that this product is in compliance with the essential requirements and other relevant provisions of European Directives applicable to the European Union: 2014/53/UE. A Declaration of Conformity is available at www.somfy.com/ce.