

SELECTING THE MOTOR

TO MATCH THE DIFFERENT TUBES...

THE SELECTION CHARTS AND LIMITS OF USE MENTIONED IN THIS CATALOGUE

...are given for information and vary according to each installation characteristic (in particular: type of slats, friction, conditions of installation, variation in power supply voltage, torque variations due to the kinematics and spring strength of each awning). Neither the manufacturer nor the seller can be responsible for bodywork and material damage.

Recommendations for the use of tubes require careful attention as well (see profiler's charts). Each awning and roller shutter manufacturer will have to test the products in order to determine his own selection charts.

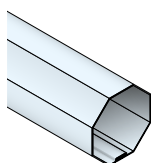
Please ask us about any specific cases.

NOTA

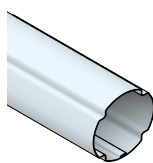
If needed, we can also make personalized selection charts according to your closure specification.

The request form is available on page 17.

ROLLER SHUTTER WITH OCTA 40 & ZF 45 TUBE



OCTA 40



ZF 45

ATTENTION

Maximum fabric weight: **30 kg**

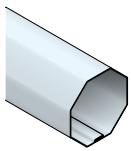
The following charts give the fabric liftable weight (in kg), according to the roller shutter characteristics and the motor torque:

TYPE OF LINK	SIZE OF LATH	SHUTTER HEIGHT	MOTOR TORQUE					
			3 Nm	4 Nm	6 Nm	9 Nm	10 Nm	13 Nm
 Spring fastener		1,5 m	8 Kg	11 Kg	17 Kg	25 Kg	28 Kg	-
		2,4 m	8 Kg	10 Kg	15 Kg	23 Kg	25 Kg	-
		3 m	7 Kg	9 Kg	14 Kg	21 Kg	23 Kg	30 Kg
 V.A.S. or V.A.R. lock		1,5 m	8 Kg	11 Kg	16 Kg	24 Kg	27 Kg	-
		2,4 m	8 Kg	10 Kg	15 Kg	23 Kg	25 Kg	-
		3 m	7 Kg	9 Kg	14 Kg	20 Kg	23 Kg	29 Kg
 Easylink lock		1,5 m	8 Kg	11 Kg	16 Kg	25 Kg	28 Kg	-
		2,4 m	8 Kg	10 Kg	15 Kg	23 Kg	26 Kg	-
		3 m	7 Kg	9 Kg	14 Kg	21 Kg	23 Kg	30 Kg

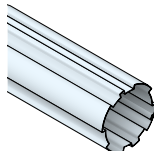
NOTA

Spring fastener: system compatible with all **Ø 40** motors **excepted with T3.5 AUTO motor**.

ROLLER SHUTTER WITH OCTA 50 & ZF 54 TUBE



OCTA 50



ZF 54

ATTENTION

Maximum fabric weight: **40 kg**

The following charts give the fabric liftable weight (in kg), according to the roller shutter characteristics and the motor torque:

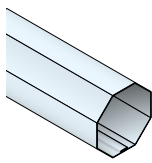
TYPE OF LINK	SIZE OF LATH	SHUTTER HEIGHT	MOTOR TORQUE											
			3 Nm	4 Nm	5 Nm	6 Nm	8 Nm	9 Nm	10 Nm	13 Nm	15 Nm	17 Nm	20 Nm	25 Nm
 Spring fastener	40 	1,5 m	8 Kg	11 Kg	14 Kg	16 Kg	22 Kg	24 Kg	27 Kg	35 Kg	-	-	-	-
		2,4 m	8 Kg	10 Kg	13 Kg	15 Kg	20 Kg	23 Kg	25 Kg	33 Kg	38 Kg	-	-	-
		3 m	7 Kg	9 Kg	12 Kg	14 Kg	19 Kg	21 Kg	24 Kg	31 Kg	35 Kg	40 Kg	-	-
	55 	1,5 m	8 Kg	10 Kg	13 Kg	15 Kg	20 Kg	23 Kg	25 Kg	33 Kg	38 Kg	-	-	-
		2,4 m	7 Kg	9 Kg	12 Kg	14 Kg	18 Kg	21 Kg	23 Kg	30 Kg	35 Kg	39 Kg	-	-
		3 m	6 Kg	9 Kg	11 Kg	13 Kg	17 Kg	19 Kg	22 Kg	28 Kg	32 Kg	37 Kg	-	-
 Rigid fastener	40 	1,5 m	8 Kg	11 Kg	13 Kg	16 Kg	21 Kg	24 Kg	27 Kg	34 Kg	40 Kg	-	-	-
		2,4 m	8 Kg	10 Kg	13 Kg	15 Kg	20 Kg	23 Kg	26 Kg	33 Kg	38 Kg	-	-	-
		3 m	7 Kg	9 Kg	12 Kg	14 Kg	18 Kg	21 Kg	23 Kg	30 Kg	35 Kg	39 Kg	-	-
	55 	1,5 m	7 Kg	10 Kg	12 Kg	15 Kg	20 Kg	22 Kg	25 Kg	32 Kg	37 Kg	-	-	-
		2,4 m	7 Kg	9 Kg	12 Kg	14 Kg	19 Kg	21 Kg	24 Kg	31 Kg	35 Kg	40 Kg	-	-
		3 m	6 Kg	8 Kg	11 Kg	13 Kg	17 Kg	19 Kg	21 Kg	27 Kg	32 Kg	36 Kg	-	-
 V.A.S. or V.A.R. lock	40 	1,5 m	6 Kg	8 Kg	11 Kg	13 Kg	17 Kg	19 Kg	21 Kg	27 Kg	32 Kg	36 Kg	-	-
		2,4 m	6 Kg	8 Kg	10 Kg	11 Kg	15 Kg	17 Kg	19 Kg	25 Kg	29 Kg	32 Kg	38 Kg	-
		3 m	5 Kg	7 Kg	9 Kg	10 Kg	14 Kg	15 Kg	17 Kg	22 Kg	26 Kg	29 Kg	34 Kg	-
	55 	1,5 m	6 Kg	8 Kg	10 Kg	12 Kg	16 Kg	18 Kg	20 Kg	25 Kg	29 Kg	33 Kg	39 Kg	-
		2,4 m	5 Kg	7 Kg	9 Kg	11 Kg	14 Kg	16 Kg	18 Kg	23 Kg	26 Kg	30 Kg	35 Kg	-
		3 m	5 Kg	6 Kg	8 Kg	9 Kg	12 Kg	14 Kg	16 Kg	20 Kg	23 Kg	26 Kg	31 Kg	39 Kg
 Easylink lock	40 	1,5 m	7 Kg	9 Kg	11 Kg	13 Kg	18 Kg	20 Kg	22 Kg	29 Kg	33 Kg	-	-	-
		2,4 m	6 Kg	8 Kg	10 Kg	12 Kg	16 Kg	18 Kg	20 Kg	26 Kg	30 Kg	34 Kg	-	-
		3 m	5 Kg	7 Kg	9 Kg	11 Kg	14 Kg	16 Kg	18 Kg	23 Kg	27 Kg	31 Kg	-	-
	55 	1,5 m	6 Kg	8 Kg	10 Kg	12 Kg	16 Kg	18 Kg	21 Kg	27 Kg	31 Kg	35 Kg	-	-
		2,4 m	6 Kg	7 Kg	9 Kg	11 Kg	15 Kg	17 Kg	19 Kg	24 Kg	28 Kg	31 Kg	-	-
		3 m	5 Kg	7 Kg	8 Kg	10 Kg	13 Kg	15 Kg	17 Kg	21 Kg	25 Kg	28 Kg	33 Kg	-

NOTA

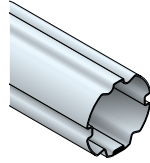
Spring and rigid fasteners: system compatible with all **Ø 40** and **Ø 50** motors

excepted with T3.5 AUTO, T5 AUTO, T5 AUTO Short and T5 AUTO Short Hz motors.

ROLLER SHUTTER WITH OCTA 60 & ZF 64 TUBE



OCTA 60



ZF 64

ATTENTION

Maximum fabric weight: **60 kg**

The following charts give the fabric liftable weight (in kg), according to the roller shutter characteristics and the motor torque:

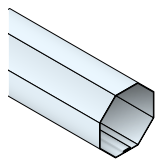
TYPE OF LINK	SIZE OF LATH	SHUTTER HEIGHT	MOTOR TORQUE													
			3 Nm	4 Nm	5 Nm	6 Nm	8 Nm	9 Nm	10 Nm	13 Nm	15 Nm	17 Nm	20 Nm	25 Nm	30 Nm	35 Nm
 Spring fastener	40 9	1,5 m	8 Kg	10 Kg	13 Kg	15 Kg	20 Kg	23 Kg	25 Kg	33 Kg	38 Kg	43 Kg	50 Kg	-	-	-
		2,4 m	7 Kg	10 Kg	12 Kg	14 Kg	19 Kg	22 Kg	24 Kg	31 Kg	36 Kg	41 Kg	48 Kg	60 Kg	-	-
		3 m	7 Kg	9 Kg	12 Kg	14 Kg	18 Kg	21 Kg	23 Kg	30 Kg	35 Kg	39 Kg	46 Kg	58 Kg	-	-
	55 14	1,5 m	8 Kg	10 Kg	13 Kg	15 Kg	20 Kg	23 Kg	25 Kg	33 Kg	38 Kg	43 Kg	50 Kg	-	-	-
		2,4 m	7 Kg	10 Kg	12 Kg	14 Kg	19 Kg	22 Kg	24 Kg	31 Kg	36 Kg	41 Kg	48 Kg	60 Kg	-	-
		3 m	7 Kg	9 Kg	12 Kg	14 Kg	18 Kg	21 Kg	23 Kg	30 Kg	35 Kg	39 Kg	46 Kg	58 Kg	-	-
 Rigid fastener	40 9	1,5 m	6 Kg	9 Kg	11 Kg	13 Kg	17 Kg	19 Kg	22 Kg	28 Kg	32 Kg	37 Kg	-	-	-	-
		2,4 m	6 Kg	8 Kg	10 Kg	12 Kg	16 Kg	18 Kg	20 Kg	25 Kg	29 Kg	33 Kg	39 Kg	-	-	-
		3 m	5 Kg	7 Kg	9 Kg	10 Kg	14 Kg	15 Kg	17 Kg	22 Kg	26 Kg	29 Kg	34 Kg	-	-	-
	55 14	1,5 m	6 Kg	8 Kg	10 Kg	11 Kg	15 Kg	17 Kg	19 Kg	25 Kg	29 Kg	32 Kg	38 Kg	-	-	-
		2,4 m	5 Kg	7 Kg	9 Kg	10 Kg	14 Kg	15 Kg	17 Kg	22 Kg	26 Kg	29 Kg	34 Kg	-	-	-
		3 m	4 Kg	6 Kg	7 Kg	9 Kg	12 Kg	13 Kg	15 Kg	19 Kg	22 Kg	25 Kg	29 Kg	36 Kg	-	-
 V.A.S. or V.A.R. lock	40 9	1,5 m	6 Kg	8 Kg	10 Kg	12 Kg	16 Kg	18 Kg	20 Kg	26 Kg	30 Kg	34 Kg	40 Kg	50 Kg	60 Kg	-
		2,4 m	5 Kg	7 Kg	9 Kg	11 Kg	14 Kg	16 Kg	18 Kg	23 Kg	27 Kg	31 Kg	36 Kg	45 Kg	54 Kg	-
		3 m	5 Kg	6 Kg	8 Kg	10 Kg	13 Kg	14 Kg	16 Kg	21 Kg	24 Kg	27 Kg	32 Kg	40 Kg	48 Kg	56 Kg
	55 14	1,5 m	6 Kg	8 Kg	10 Kg	12 Kg	16 Kg	18 Kg	20 Kg	25 Kg	29 Kg	33 Kg	39 Kg	49 Kg	59 Kg	-
		2,4 m	5 Kg	7 Kg	9 Kg	10 Kg	14 Kg	15 Kg	17 Kg	22 Kg	26 Kg	29 Kg	34 Kg	43 Kg	51 Kg	60 Kg
		3 m	5 Kg	6 Kg	8 Kg	9 Kg	12 Kg	14 Kg	16 Kg	20 Kg	23 Kg	26 Kg	31 Kg	39 Kg	47 Kg	54 Kg
 OCTOEASY Easylink lock	40 9	1,5 m	-	9 Kg	11 Kg	13 Kg	18 Kg	20 Kg	22 Kg	29 Kg	33 Kg	-	-	-	-	-
		2,4 m	-	8 Kg	10 Kg	12 Kg	16 Kg	18 Kg	20 Kg	26 Kg	30 Kg	34 Kg	-	-	-	-
		3 m	-	7 Kg	9 Kg	11 Kg	14 Kg	16 Kg	18 Kg	23 Kg	27 Kg	31 Kg	-	-	-	-
	55 14	1,5 m	-	8 Kg	10 Kg	11 Kg	15 Kg	17 Kg	19 Kg	25 Kg	29 Kg	32 Kg	-	-	-	-
		2,4 m	-	7 Kg	9 Kg	10 Kg	14 Kg	15 Kg	17 Kg	22 Kg	26 Kg	29 Kg	34 Kg	-	-	-
		3 m	-	6 Kg	8 Kg	9 Kg	12 Kg	14 Kg	15 Kg	20 Kg	23 Kg	26 Kg	30 Kg	-	-	-

NOTA

Spring and rigid fasteners: system compatible with all **Ø 40** and **Ø 50** motors

excepted with T3.5 AUTO, T5 AUTO, T5 AUTO Short and T5 AUTO Short Hz motors.

ROLLER SHUTTER WITH OCTA 70 TUBE

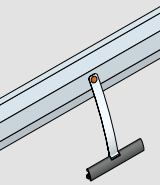
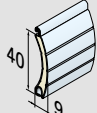
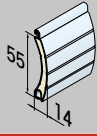
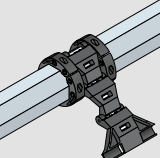
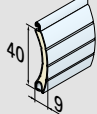
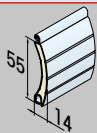


OCTA 70

ATTENTION

Maximum fabric weight: **100 kg**

The following charts give the fabric liftable weight (in kg), according to the roller shutter characteristics and the motor torque:

TYPE OF LINK	SIZE OF LATH	SHUTTER HEIGHT	MOTOR TORQUE												
			8 Nm	10 Nm	15 Nm	20 Nm	25 Nm	30 Nm	35 Nm	40 Nm	50 Nm	55 Nm	60 Nm	70 Nm	80 Nm
 Spring fastener	40 	1,5 m	18 Kg	23 Kg	35 Kg	46 Kg	58 Kg	69 Kg	-	-	-	-	-	-	-
		2,4 m	16 Kg	20 Kg	30 Kg	40 Kg	50 Kg	60 Kg	70 Kg	-	-	-	-	-	-
		3 m	14 Kg	18 Kg	27 Kg	36 Kg	45 Kg	54 Kg	63 Kg	-	-	-	-	-	-
	55 	1,5 m	15 Kg	19 Kg	28 Kg	37 Kg	46 Kg	56 Kg	65 Kg	74 Kg	93 Kg	-	-	-	-
		2,4 m	12 Kg	15 Kg	23 Kg	30 Kg	38 Kg	45 Kg	53 Kg	60 Kg	75 Kg	83 Kg	90 Kg	-	-
		3 m	11 Kg	14 Kg	20 Kg	27 Kg	34 Kg	41 Kg	47 Kg	54 Kg	68 Kg	74 Kg	81 Kg	95 Kg	-
 V.A.S. or V.A.R. lock	40 	1,5 m	15 Kg	19 Kg	28 Kg	37 Kg	46 Kg	56 Kg	65 Kg	-	-	-	-	-	-
		2,4 m	12 Kg	15 Kg	23 Kg	30 Kg	38 Kg	45 Kg	53 Kg	60 Kg	-	-	-	-	-
		3 m	11 Kg	14 Kg	20 Kg	27 Kg	34 Kg	41 Kg	47 Kg	54 Kg	68 Kg	-	-	-	-
	55 	1,5 m	12 Kg	16 Kg	23 Kg	31 Kg	39 Kg	47 Kg	54 Kg	62 Kg	78 Kg	85 Kg	93 Kg	-	-
		2,4 m	10 Kg	12 Kg	18 Kg	24 Kg	30 Kg	36 Kg	42 Kg	48 Kg	60 Kg	66 Kg	72 Kg	84 Kg	96 Kg
		3 m	8 Kg	11 Kg	16 Kg	21 Kg	26 Kg	32 Kg	37 Kg	42 Kg	53 Kg	58 Kg	63 Kg	74 Kg	84 Kg

NOTA

Spring fastener: system compatible with all **Ø 50** and **Ø 60** motors

excepted with T5 AUTO, T5 AUTO Short and T5 AUTO Short Hz motors.